

PLAGETTE 32



AFS
REAL ESTATE
www.afsrealestate.com

db DUBRICKS
POSSIBILITIES ARE LIMITLESS

An aerial photograph of a modern, luxurious resort complex. The central feature is a large, rectangular swimming pool with a light blue-green hue, surrounded by numerous lounge chairs and palm trees. To the right of the pool is a sandy beach area with more lounge chairs and people walking. In the background, there are several multi-story buildings with modern architecture, surrounded by lush greenery and palm trees. The overall scene is bright and sunny, suggesting a tropical or coastal location.

Welcome to *Plazette 32*

AN ODE TO 'LA BELLE VIE' TAKING INSPIRATION FROM THE EUROPEAN RIVIERAS BRINGING IT TO LIFE AT THE HEART OF TILAL AL GHAF. BENEATH THE WAKING SUN'S GOLDEN KISS, A LAGOON WHISPERS IN A BLUE BLISS. BIENVENUE TO YOUR CHIC ABODE IN 32 SHADES OF ELEGANCE.

In 1992, our founder Mr. Majid Al Futtaim envisioned how to create a space in which families, friends and communities could craft lifelong memories. He wanted to transform shopping, entertainment and leisure to create great moments for everyone, every day.

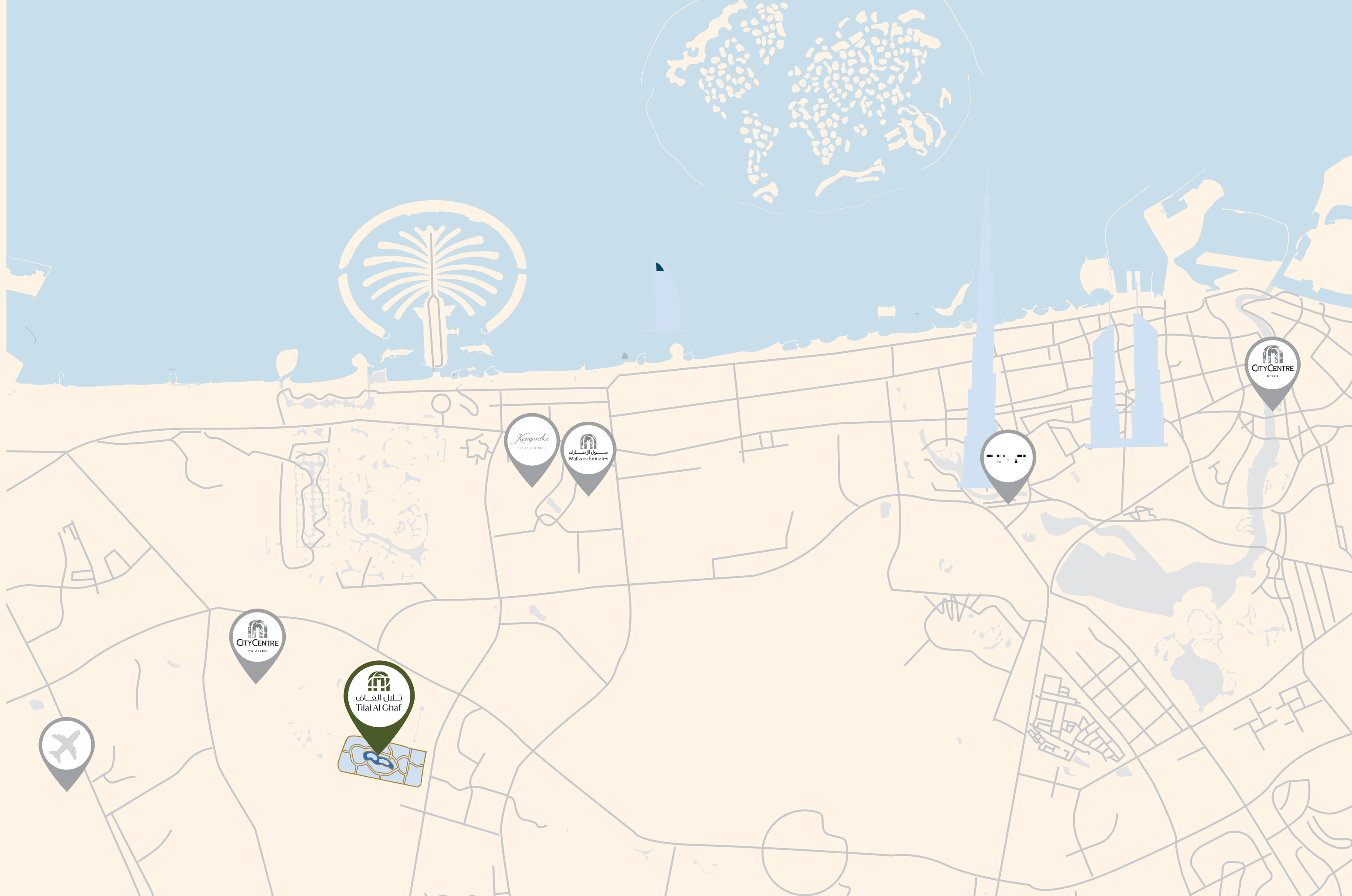
As well as our world-renowned retail establishments, we create masterful living spaces within five mixed-use communities through the art of placemaking, housing more than 2,500 families across the UAE, Oman and Lebanon.

Plagette32 brings in a fresh breeze inspired by the French Rivas all the way to Tilal Al Ghaf. It is an exclusive and premium beachside neighbourhood, crafted down to every detail to offer a chic lifestyle. It is bespoke, unique and it reflects who you are.

|
Signature Living

BY MAJID AL FUTTAIM

A few Steps from Everything



Conveniently located just 25 mins from the Dubai International Airport and 15 mins from the renowned Mall of the Emirates, your new haven will offer seamless connectivity to the most prominent addresses in Dubai.



30 MINS
DXB AIRPORT



25 MINS
AL MAKTOUM INTERNATIONAL AIRPORT



15 MINS
MALL OF THE EMIRATES



10 MINS
CITY CENTRE ME'AISEM



15 MINS
KEMPINSKI HOTEL



25 MINS
DOWNTOWN DUBAI

Tilal Al Ghaf is an exceptional community centred around a stunning lagoon bordered by white sandy beaches. The community features nearly 500,000 square metres of parks, green open spaces and treescapes, with walkable neighbourhoods interconnected by 18 kilometres of walking trails, and 11 kilometres of cycling and jogging tracks, all set in lush landscaping.

A world of culinary experiences, signature Majid Al Futtaim retail experiences and a renowned international school are conveniently located just a short stroll away.

|
Premium Living
AT TILAL AL GHAF

TILAL AL GHAF MASTERPLAN



3M+

SQM TOTAL SITE AREA

15K+

RESIDENTS

11KM+

CYCLING TRAILS

3.5K+

HOMES

25+

MAJID AL FUTTAIM
SIGNATURE RETAIL

1

BEACH CLUB

18KM

LANDSCAPED
PEDESTRIAN
WALKWAYS

100K

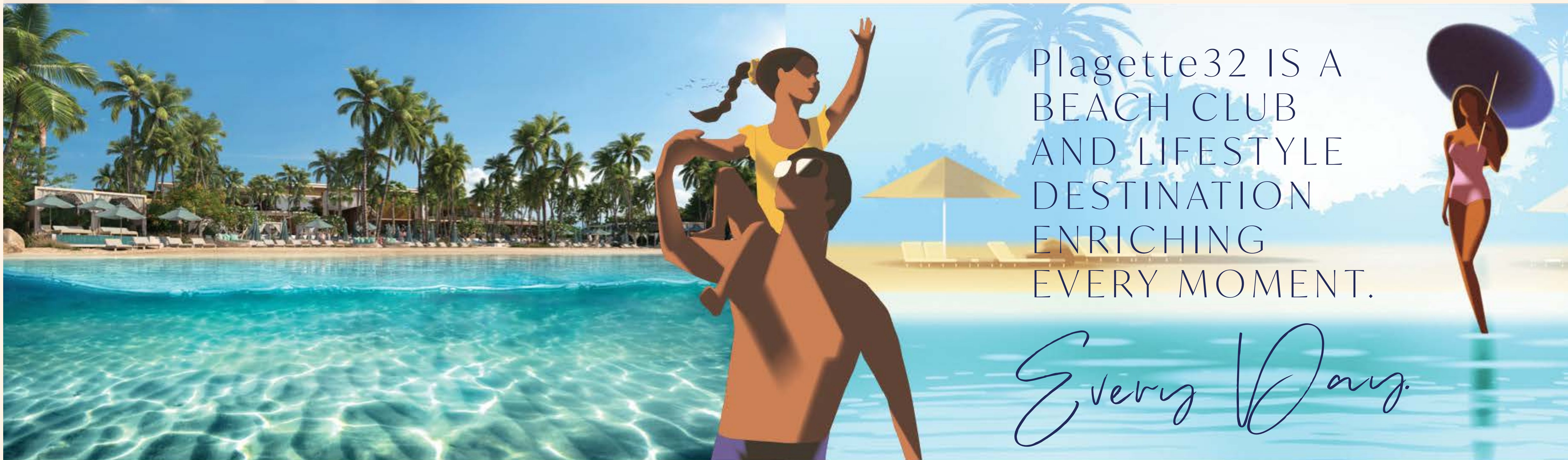
SQM RECREATIONAL
LAGOON & WHITE SANDY
BEACHES

1

ROYAL GRAMMAR
SCHOOL GUILFORD
DUBAI

COMMUNITY HUB

EXCLUSIVE SHOPPING, DINING, RECREATION
AND WELLNESS



Plagette32 IS A
BEACH CLUB
AND LIFESTYLE
DESTINATION
ENRICHING
EVERY MOMENT.

Every Day.



KEY PLAN

1 WATER BUNGALOWS

2 CLUB VILLAS

3 BEACH CLUB



RECREATIONAL POOL



FAMILY POOL



KIDS' POOL



POOL BAR



PRIVATE BEACH



BEACH BAR



VIP CABANAS WITH
DEDICATED POOLS



LIVE DJ BOOTH



A RANGE OF POOL
AND BEACH LOUNGING
OPTIONS



RESTAURANTS

Operated by the globally renowned

sunset
HOSPITALITY GROUP



COLLABORATORS

NABIL GHOLAM ARCHITECTS

An international multidisciplinary team of architects, planners, designers and consultants with a portfolio spanning an extensive list of projects in architecture and urbanism. nga has attracted attention, winning several competitions and major international awards.

COLLABORATORS

BERGMAN DESIGN HOUSE

Bergman Design House is a luxury design studio specialising in exquisite interiors and architectural design for the hospitality, commercial, residential and superyacht sectors. Co-founded in 2017 by Marie Soliman and Albin Berglund, the firm has built up an enviable portfolio of international projects at some of the most exclusive addresses.





LUSH TAPESTRY OF NATURE'S TRANQUILLITY

Plagette32 at Tilal Al Ghaf is the epitome of exclusive luxury residences with its private beach club designed for refined indulgence. From the lush amenities to themed zones, each section blends beauty with nature's tranquillity beside crystalline waters. A serene escapade for reflection and family moments, a scenography in perfect harmony.

BEACH CLUB



Ever since the 1950s, when Brigitte Bardot set foot in St-Tropez, the Côte d'Azur has been a magnet for the jet set, an enduring symbol of elegance and glamour that continues to captivate.

Capturing that same spirit, style and sophistication, Plagette, a very unique beach club, brings a slice of the sun-kissed Riviera to Tilal Al Ghaf, granting its privileged residents an unparalleled lifestyle that delivers 'La Belle Vie' all year-round.

In Tilal Al Ghaf, Riviera chic has an alluring new address...

PLAGETTE





Beach Club



Beach Club

تلال الغاف
Tilal Al Ghaf

PLAGETTE



Beach Club



Beach Club



Beach Club

تال الفخاف
Tilal Al Ghaf

PLAGETTE



Beach Club



Beach Club

تلال الفخاف
Tilal Al Ghaf

PLAGETTE

WATER BUNGALOWS



WATER BUNGALOWS
KEY PLAN



Our 4 exclusive bungalows line the edge of the serene sandy lagoon, offering direct access to its crystalline water and neighbouring beach club. A series of hammered stone walls creates a playful rhythm and an iconic design where each bungalow boasts its own private garden, outdoor patio and pool.

Purposefully grounded and blending within the natural topography, this intimate retreat is a wondrous haven for personal well-being. Its intricate designs are characterised by light and an organic palette with Zen influences gives you a sense of comfort.





Water Bungalows | Exterior



Water Bungalows | Exterior



تلال الغاف
Tilal Al Ghaf

PLAGETTE 32



Water Bungalows | Exterior



Water Bungalows | Exterior



Water Bungalows | Exterior





Water Bungalows | Exterior





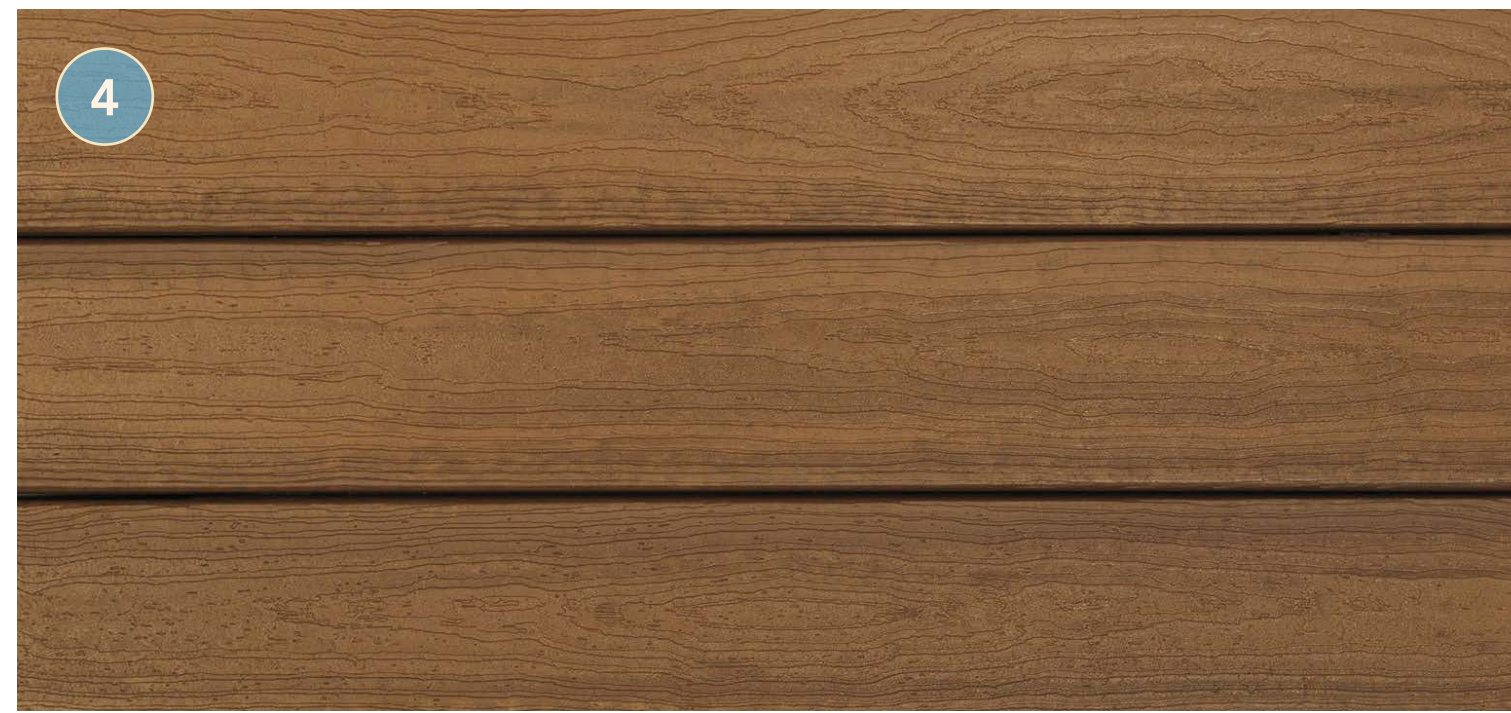
Water Bungalows | Exterior



Water Bungalows | Exterior



Water Bungalows | Exterior



1. Natural stone cladding
2. Scraped finish render paint
3. Metal accents
4. Composite decking
5. Louvers

WATER BUNGALOWS
**EXTERIOR
MATERIALS**

WATER BUNGALOWS
INTERIORS











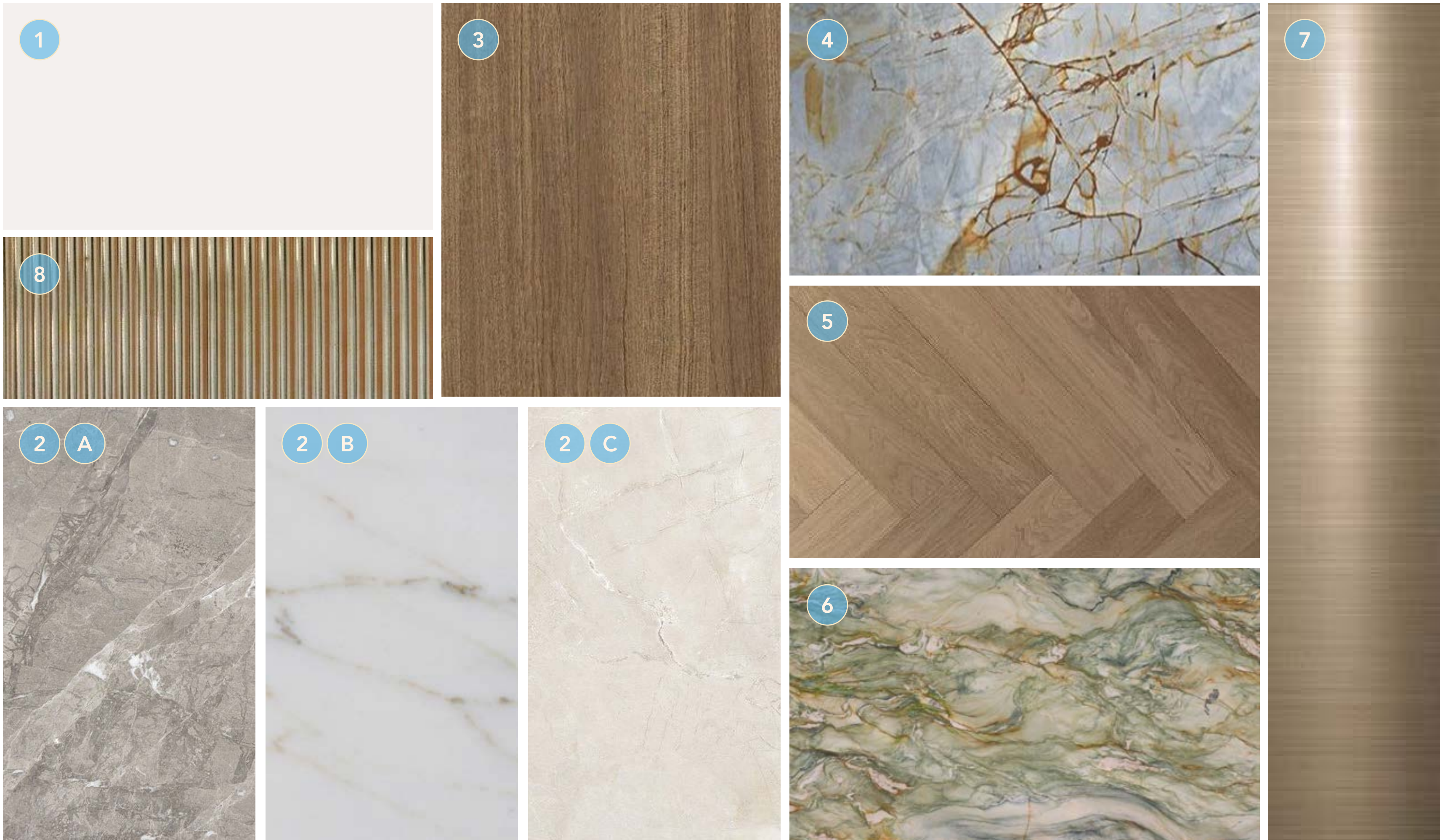




Water Bungalows | Interior







1. General paint
2. General flooring (A,B,C)
3. General veneer
4. Kitchen stone

5. Bedroom parquet flooring
6. Master bathroom vanity
7. Accent metal
8. Accent fluted glass

WATER BUNGALOWS

INTERIOR MATERIALS



CLUB VILLAS

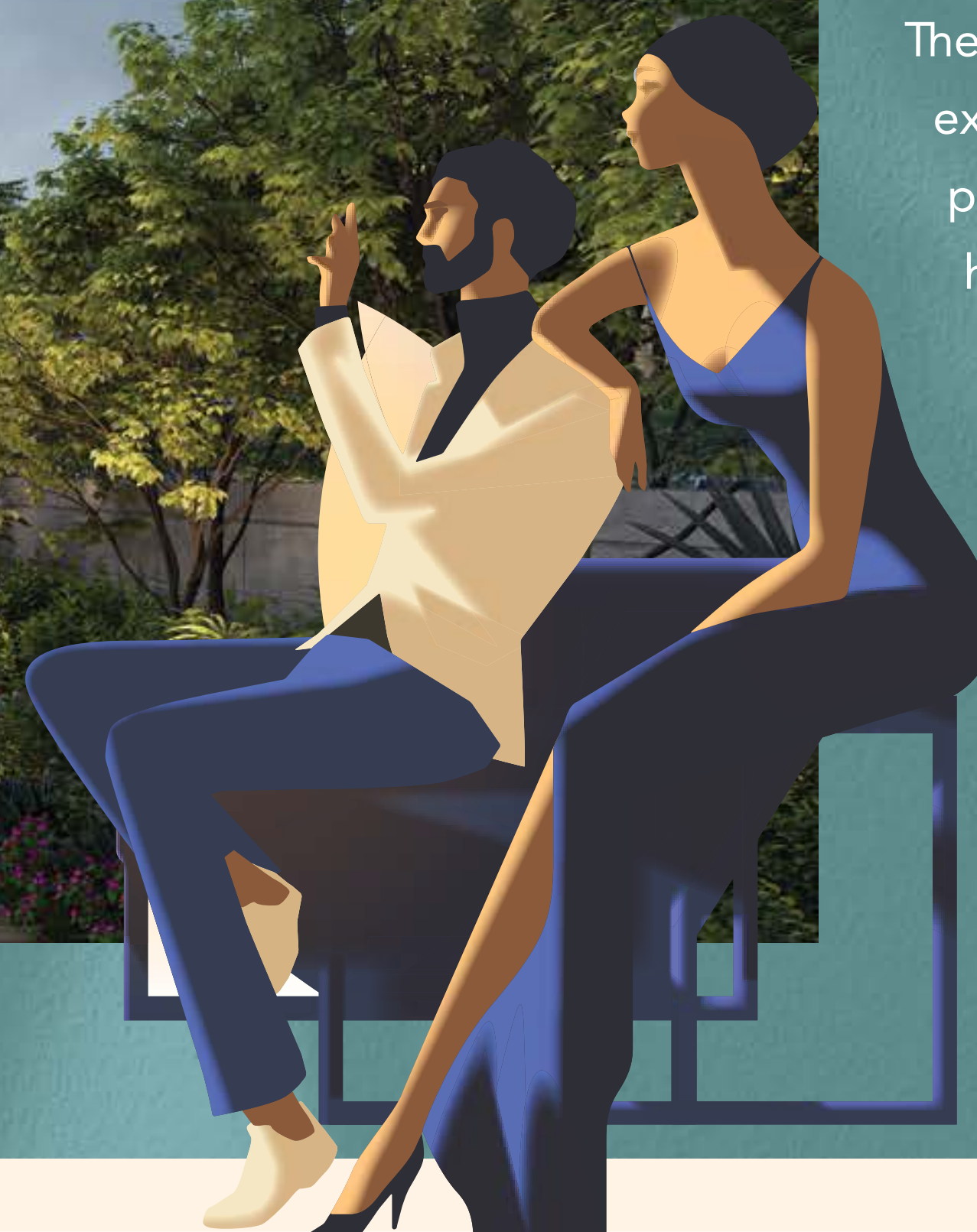
CLUB VILLAS
KEY PLAN





Bespoke with a French touch, these 28 three-floor villas follow the snaking contours of the masterplan. They introduce greenery into the living quarters, oriented towards the lagoon on one side, and the park on the other; optimally framing the scenic landscape.

The scenography of the living experience is set up with a procession of single and double height spaces leading from the entrance to the garden and the beyond, combining contemporary design with luxurious comfort. Optimal for a summer retreat.







Club Villas | Exterior



تلال الغاف
Tital Al Ghaf

PLAGETTE 32



Club Villas | Exterior



Club Villas | Exterior



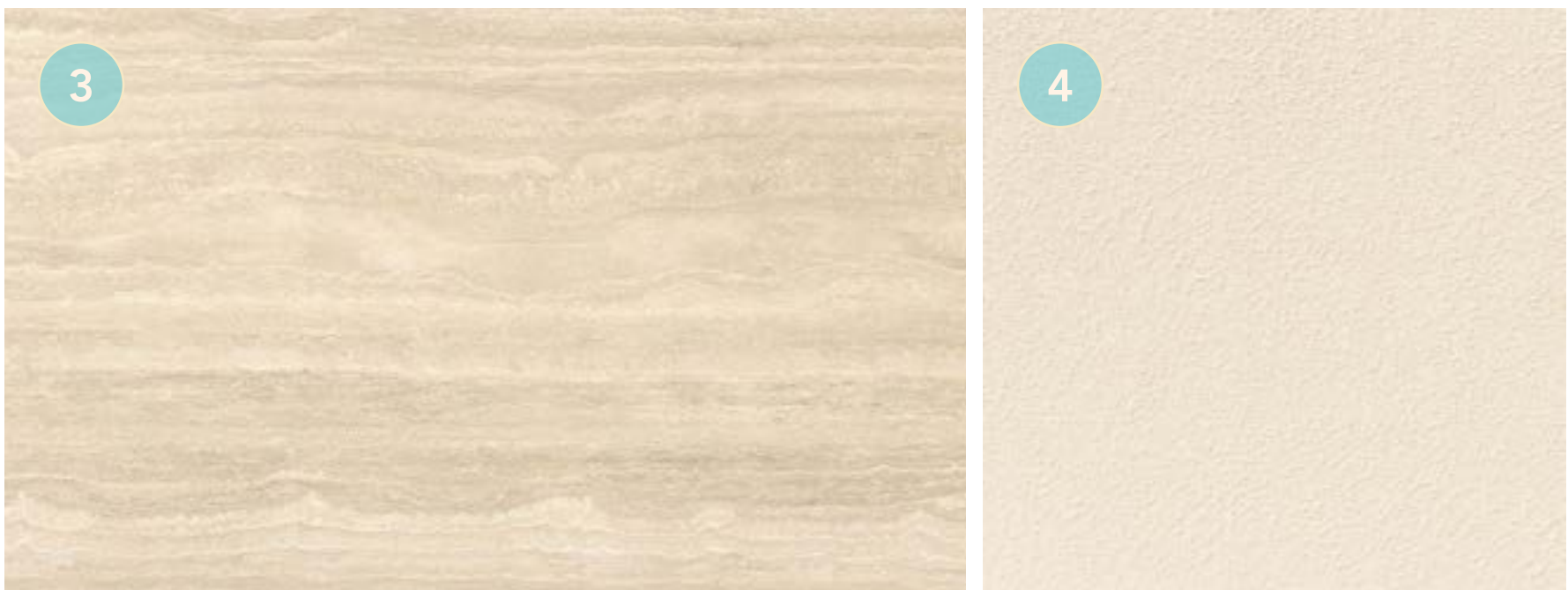
تلال الغاف
Tital Al Ghaf

PLAGETTE 32

GREY EXTERIOR VILLA



BEIGE EXTERIOR VILLA



- 1. Grey exterior - cladding
- 2. Grey exterior - render paint
- 3. Beige exterior - cladding
- 4. Beige exterior - render paint

COMMON EXTERIOR FINISHES BETWEEN BOTH SCHEMES



- 5. Exterior cladding
- 6. Metal accents
- 7. Louvers

CLUB VILLAS
EXTERIOR
MATERIALS

CLUB VILLAS
INTERIORS









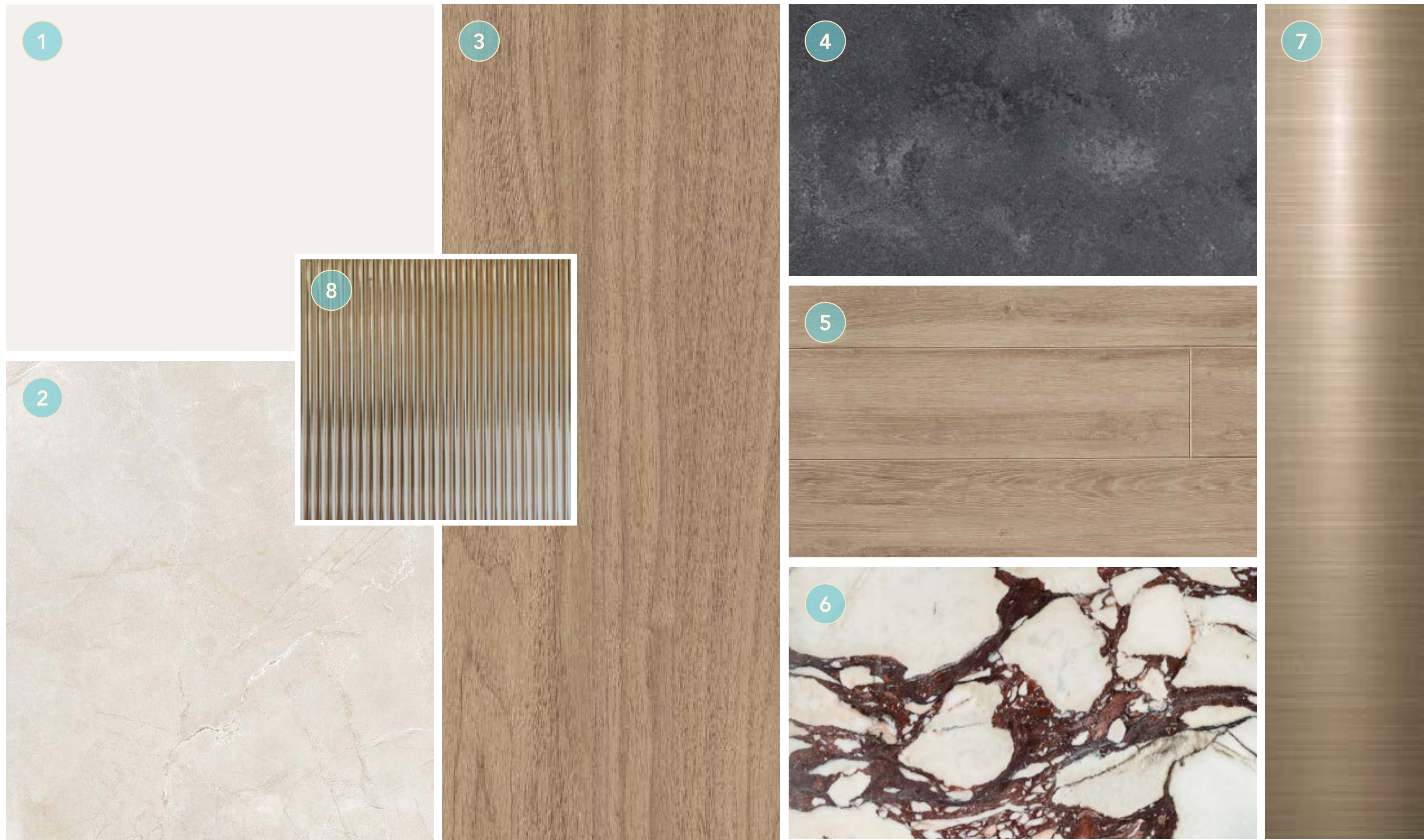










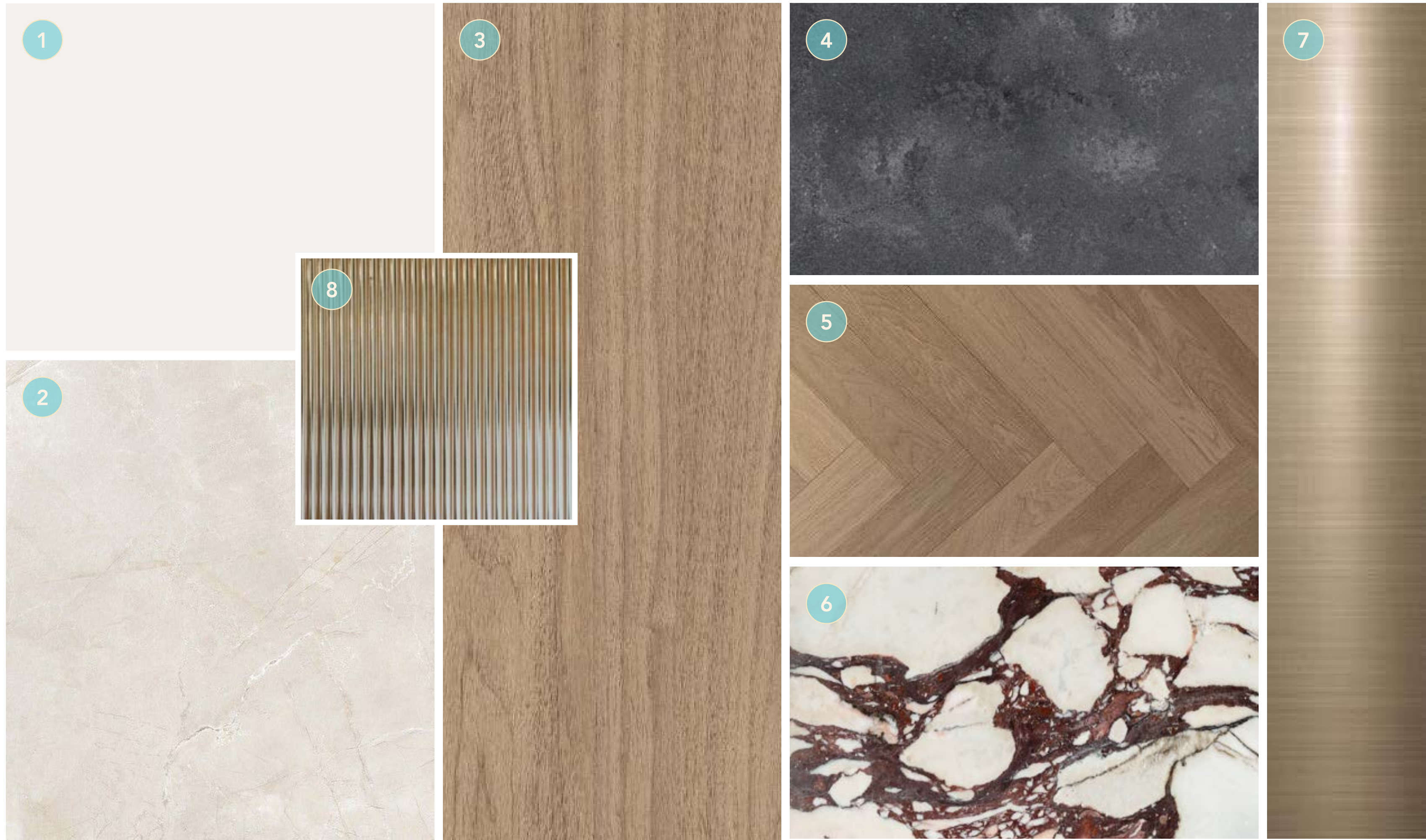


1. General paint
2. General flooring
3. General veneer
4. Kitchen stone
5. Second floor tile
6. Master bathroom vanity
7. Accent metal
8. Accent fluted glass

CLUB VILLAS

INTERIOR MATERIALS

GLAMOUR



- 1. General paint
- 2. General flooring
- 3. General veneer
- 4. Kitchen counter

- 5. Bedroom parquet flooring
- 6. Master bathroom vanity
- 7. Accent metal
- 8. Accent fluted glass

CLUB VILLAS

INTERIOR MATERIALS

PRESTIGE

FOR MORE INFORMATION PLEASE CONTACT



 +971 55 476 7630

 +971 4 368 7878

 info@afsrealestate.com

 www.afsrealestate.com



 +971 50 674 2020

 +971 4 368 7878

 info@dubricks.com

 www.dubricks.com